

**ENCOMPASS  
PRODUCTS**

**ELWOOD®**

**HIGH PERFORMANCE  
MOTORS**  
SERVOS - STEPPERS

## LEGACY SERVO MOTORS AND CABLES:

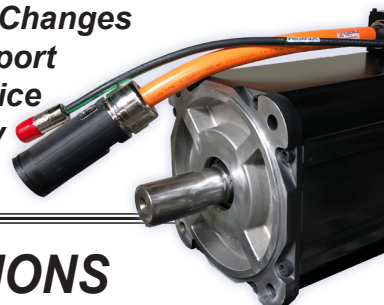
All Elwood legacy servo motors are true form, fit, and function replacements for Rockwell Automation/Allen-Bradley motors. Elwood's motors are new and built with OEM components. Elwood's motors provide drop-in replacement functionality for servos that are no longer available from Rockwell Automation.

### LEGACY MOTORS SUPPORTED:

- **F-SERIES:** 230V Medium Inertia
- **H-SERIES:** 230V Low-Inertia
- **W-SERIES:** 230V All-Stainless
- **N-SERIES:** 230V Low/Medium Inertia
- **1326AB:** 460V Medium inertia
- **1326AS:** 460V Low-Inertia
- **CABLE SETS:** All Series Supported

### LEGACY SERIES FEATURES:

- **Identical Dimensions**
- **Identical Performance**
- **No Software Changes**
- **Lifetime Support**
- **Rebuild Service**
- **Full Warranty**



## MP SERIES HARDENING/MODIFICATIONS

Do you have an application where shock and vibration levels exceed standard servo motor specifications?

- **Punch Presses**
- **Press Feeds**
- **Forest Products**

Elwood's MP Series modification program addresses problems that affect servo motors in high shock and vibration environments: connector/contact fretting (lose of feed-back signal), connector degradation, conductor fatigue, insulation degradation/breakdown, etc.

Elwood will assess the typical failure modes of servo motors in the application and design a modification solution to mitigate each. Elwood's program includes a full factory warranty covering the materials and workmanship included in both motors and modifications.size.

## EXPLOSION PROOF SERVO MOTORS:

**SX-Series:** Rugged servo motors for hazardous locations with versions available for gas/vapor (class I) as well as dust (class II) environments. Elwood's SX-Series carries the most complete set of ratings for hazardous locations of any servo motor manufacturer including UL/cUL and ATEX (with IECEx coming soon).

### SX-SERIES FEATURES:

- **UL/cUL rated for Class I, Groups C & D (Hazardous Gas)**
- **UL/cUL rated for Class II, Groups E, F, & G (Hazardous Dust)**
- **ENABLED for use with Studio5000 & Kinetix**
- **Hiperface DSL, Hiperface & Resolver feedback with CMF Files**
- **Available for sizing in Motion Analyzer**

**ELWOOD®** HIGH PERFORMANCE  
**MOTORS**  
SERVOS - STEPPERS

ELWOOD HIGH PERFORMANCE MOTORS  
2701 N. GREEN BAY ROAD  
RACINE, WI 53404, USA

phone: 262-637-6591  
email: info@elwood.com  
web://www.elwood.com/motors



Encompass™  
Product Partner

A ROCKWELL AUTOMATION PARTNER  
Americas



## SW SERIES

### RUGGED WASH-DOWN SERVO

Extremely rugged design for demanding environments such as automotive and machine tool industries.



- 2, 3, 4, 6 & 7" Frame Sizes
- 5 LB-IN (0.6 Nm) to 440 LB-IN (50 Nm) Continuous Torque
- Rugged Design for Long Life
- Designed for IP66 Sealing (High Pressure Wash Down)
- 115V / 230V / 460V Windings
- Resolver, Encoder & Absolute Feedback Options
- English, Metric, NEMA, or Custom Mounting Flange
- Custom Shafts & Connectors



[www.elwood.com/gettys\\_wd.shtml](http://www.elwood.com/gettys_wd.shtml)

## SF SERIES

### FOOD-GRADE SERVO

Designed exclusively for the food and baking industries. Capable of withstanding repeated high pressure wash downs. Smooth housing and special connectors minimize potential entrapment areas.



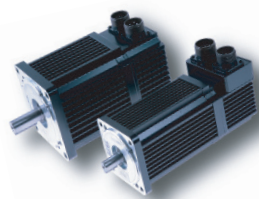
- 2, 3, 4, 6 and 7" Frame Sizes
- "Finless" Extruded Aluminum Housing
- FDA-Approved Epoxy Coating
- 5 LB-IN (0.6 Nm) to 440 LB-IN (50 Nm) Torque Range
- Designed for IP66 Sealing (High Pressure Wash Down)
- 115V / 230V / 460V Windings
- English, Metric, NEMA, or Custom Mounting Flange

[www.elwood.com/gettys\\_fg.shtml](http://www.elwood.com/gettys_fg.shtml)

## H&F SERIES

### LOW & MEDIUM INERTIA SERVO

Authorized replacements for Rockwell Automation's F, H, S, W, and 1326AS Series servo motors. True drop-in, mechanically and electrically identical to originals.



- Rockwell Automation Encompass Partner
- Identical performance
- 3", 4", and 6" frame sizes available
- All OEM components
- Available indefinitely
- Rebuilds available regardless of original manufacturer
- Cable sets available

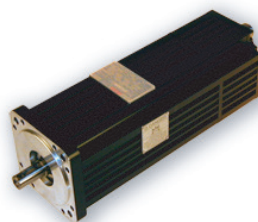


[www.elwood.com/gettys\\_rockwell.shtml](http://www.elwood.com/gettys_rockwell.shtml)

## SX SERIES

### EXPLOSION-PROOF SERVO

Ideal for hazardous locations where dust, vapors, or gasses form potentially flammable or explosive environments. Can be applied virtually worldwide.



- 3, 4, 6 & 7" Frame Sizes
- UL/cUL Listed (North America)
- Class I Div 1 & 2, Groups C, D
- Class II Div 1 & 2 Groups E, F, G
- 3, 4, & 6" Frame Sizes
- ATEX Certified, Ex d IIB T3
- 10.4 LB-IN (1.2 Nm) to 440 LB-IN (49.8 Nm) Torque Range
- NPT Pipe Thread Lead Exit
- Many Feedback Options
- English, Metric or NEMA Mounting

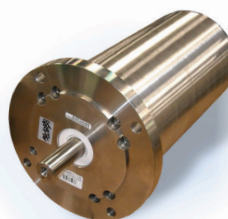


[www.elwood.com/gettys\\_sx.shtml](http://www.elwood.com/gettys_sx.shtml)

## W SERIES

### ALL STAINLESS STEEL SERVO

All stainless steel servo motors are designed for long life in harsh environments where frequent caustic wash cycles compromise motors constructed with traditional aluminum and open lamination housings.



- Based on 2", 3" & 4" frame sizes
- 0.5 Nm to 7.2 Nm Cont. Torque
- 304 Stainless Steel Housing
- Corrosion Resistant from 1 to 12 pH
- Minimal Cracks or Crevices
- Cable sets available

[www.elwood.com/gettys\\_w.shtml](http://www.elwood.com/gettys_w.shtml)

**ELWOOD®** HIGH PERFORMANCE  
MOTORS  
SERVOS - STEPPERS

ELWOOD HIGH PERFORMANCE MOTORS

2701 North Green Bay Road • Racine, Wisconsin 53404

Phone: (800) 558-9489 • Fax: (414) 764-4298

email: [info@elwood.com](mailto:info@elwood.com)

web: [www.elwood.com/motors](http://www.elwood.com/motors)