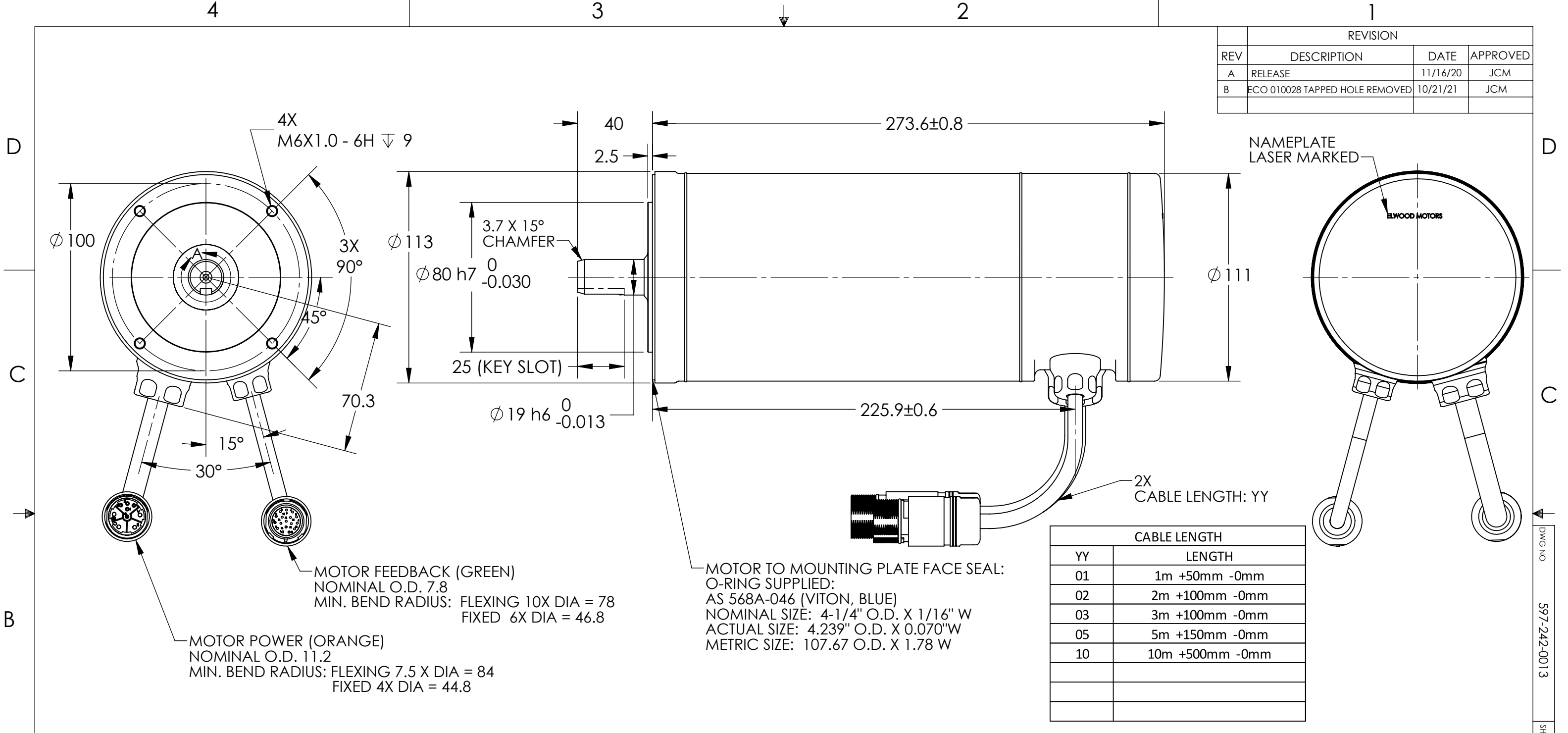
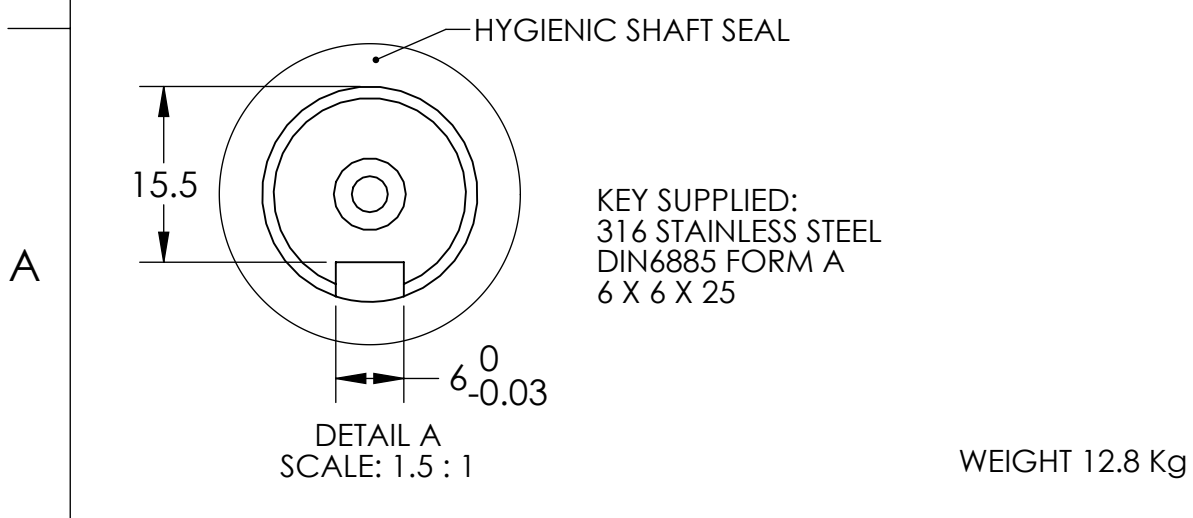


REVISION			
REV	DESCRIPTION	DATE	APPROVED
A	RELEASE	11/16/20	JCM
B	ECO 010028 TAPPED HOLE REMOVED	10/21/21	JCM



CABLE LENGTH	
YY	LENGTH
01	1m +50mm -0mm
02	2m +100mm -0mm
03	3m +100mm -0mm
05	5m +150mm -0mm
10	10m +500mm -0mm



**MOUNTING POSITIONS:**  
 IM 3601 (IM B14) HORIZONTAL SHAFT, STRAIN RELIEF'S MOTOR HOUSING FLATS CAN NOT BE HORIZONTAL  
 IM 3611 (IM V18) VERTICAL SHAFT FACING DOWN  
 IM 3631 (IM V19) VERTICAL SHAFT FACING UP IF MOTOR IS MOUNTED TO GEARBOX or PROVIDED SHAFT/SEAL AREA IS EXCLUDED FROM HYGIENIC REQUIREMENTS

FIRST USED 999-001-2161	TOLERANCE UNLESS OTHERWISE SPECIFIED	DRAWN JCM 11/11/20	MFG. APPROVED	Elwood Corporation - Motors Group 2701 N. Green Bay Rd Racine, WI, U.S.A.	
MATERIAL	FRACTIONS 1/32 (.794 mm) .XX ±.01 (.254 mm) .XXX ±.005 (.127 mm) .XXXX ±.0005 (.0127 mm)	CHECKED	OTHER APPROVED		
FINAL FINISH	ANGLES ±1 DEGREE	ENG. APPROVED	997- 997-002-9934	SIZE B	SOLIDWORKS CAD
NOTE: UNLESS OTHERWISE SPECIFIED. 1. REMOVE ALL BURRS AND SHARP EDGES. 2. CHAMFER FIRST THD. ALL TAPPED HOLES. 3. 4.	SURFACE FINISH OR BETTER 125 ✓	"THIS DOCUMENT AND ALL INFORMATION CONTAINED OR IMPLIED HERIN IS THE PROPERTY OF ELWOOD CORP. IT SHALL NOT BE DUPLICATED OR COMMUNICATED TO OTHERS NOR USED FOR PURPOSES OTHER THAN THOSE FOR WHICH IT WAS SPECIFICALLY FURNISHED."		SCALE NONE	EDN
WEIGHT 12.8 Kg				PART NO 597-242-0013	SHEET 1 OF 1

DWG NO 597-242-0013 SH 1