

4

3

2

1

NOTE:
GEARBOX MATING SURFACE
FOR O-RING SEAL TO HAVE
32 RMS SURFACE FINISH.

O-RING SUPPLIED
MATERIAL: NITRILE (NBR)
PARKER NUMBER 2-152-N674 OR EQUIVALENT
I.D. 3.237 WIDTH .103

M6 X 1-6H ∇ 16

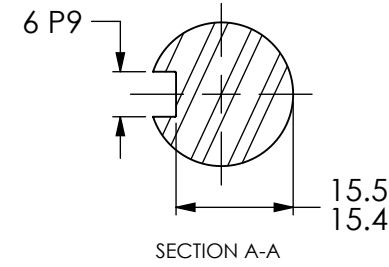
4X \varnothing 9 THRU

POWER
CONNECTOR
M23 SPEEDTEC
(3+PE) + 5

FEEDBACK
CONNECTOR
M23 SPEEDTEC
17 POSITION

\varnothing 19 k6
0.035

\varnothing 80 j6
0.08 A



REVISION			
REV	DESCRIPTION	DATE	APPROVED
A	PRODUCTION RELEASE	02/05/20	DAW
B	ECO009748; CHG NAMEPLATE	07/22/20	DAW
C	ECO009966; UPDATE DIM "X" NO BRAKE	07/02/21	DAW

D

C

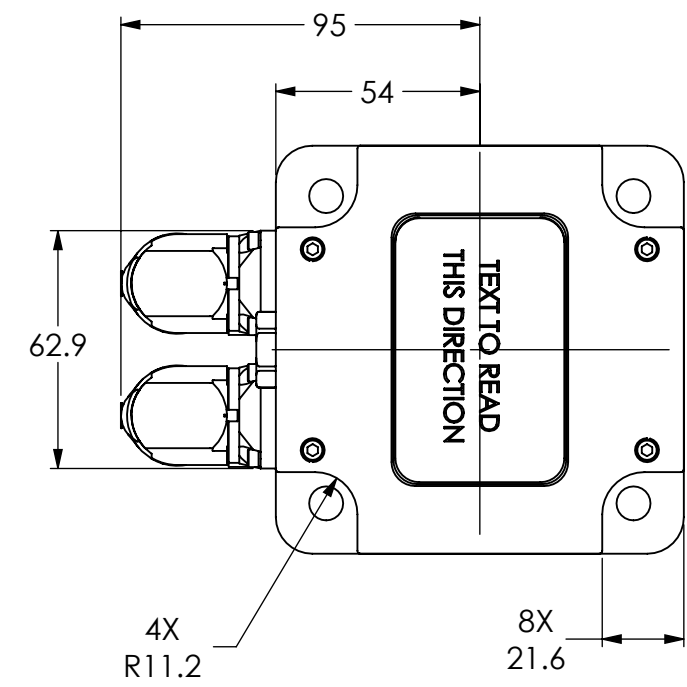
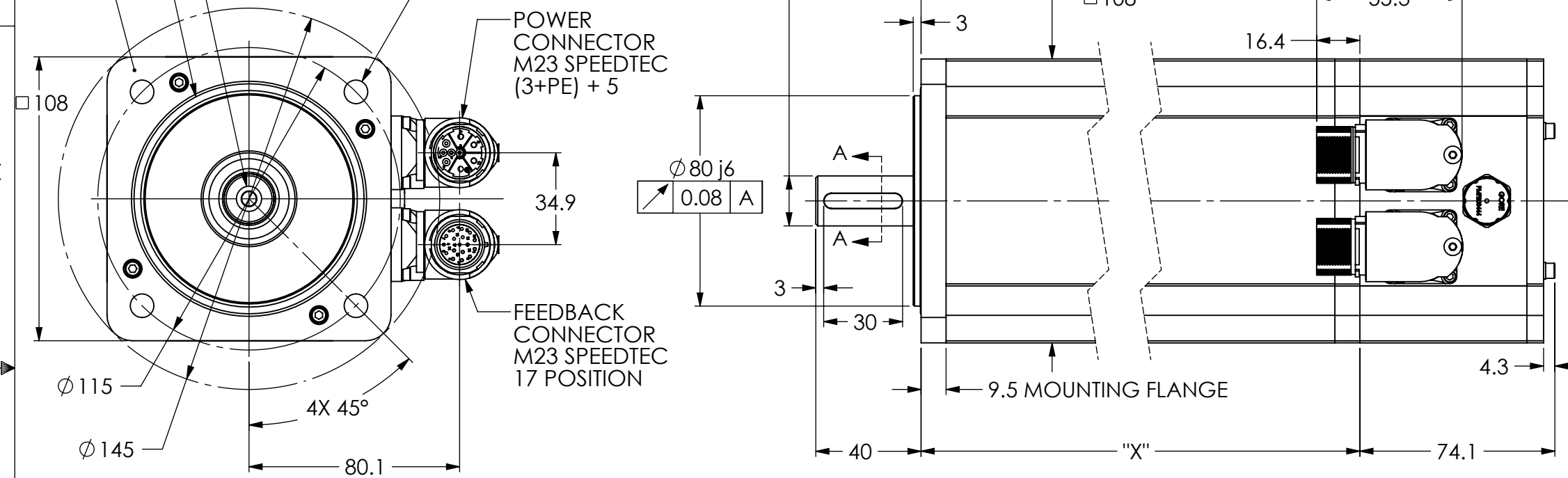
B

A

D

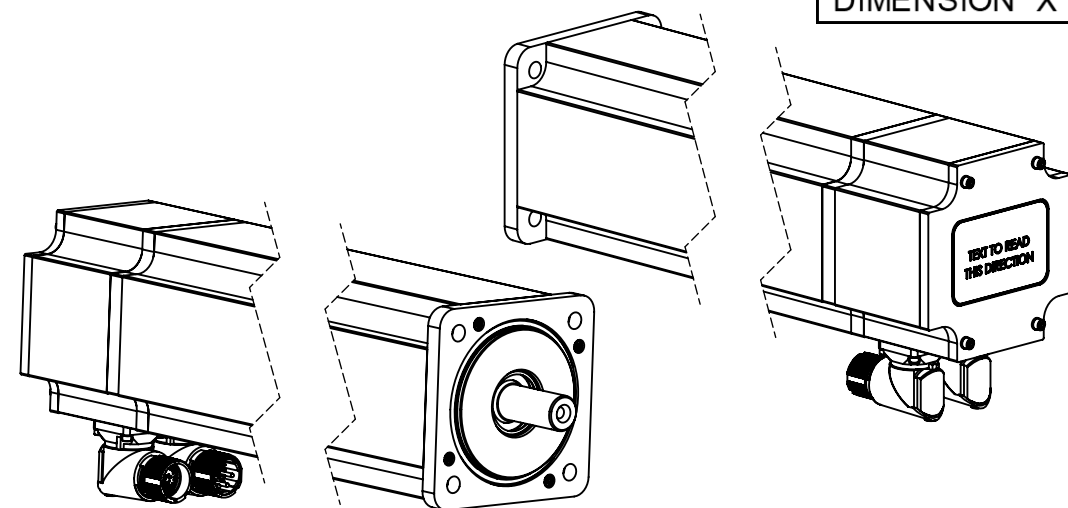
C

A



DATA	UNITS	MOTOR					
		M442		M443		M444	
		NO BRAKE	BRAKE	NO BRAKE	BRAKE	NO BRAKE	BRAKE
DIMENSION "X"	MM	190.0	245.4	228.1	283.5	266.2	321.6

NOTES:
1. ALL DIMENSIONS ARE MM
2. UNLESS SPECIFIC TOLERANCES
ARE SHOWN, ALL DIMENSIONS ARE
REFERENCE ONLY.



FIRST USED 999-001-1894 M443-KNOB-OWEN	TOLERANCE UNLESS OTHERWISE SPECIFIED	DRAWN DAW 02/05/20	MFG. APPROVED
MATERIAL	FRACTIONS 1/32 (.794 mm) .XX \pm .01 (.254 mm) .XXX \pm .005 (.127 mm) .XXXX \pm .0005 (.0127 mm)	CHECKED	OTHER APPROVED
FINAL FINISH	ANGLES \pm 1 DEGREE	ENG. APPROVED	RELEASED 997-002-9725
NOTE: UNLESS OTHERWISE SPECIFIED. 1. REMOVE ALL BURRS AND SHARP EDGES. 2. CHAMFER FIRST THD. ALL TAPPED HOLES. 3. 4.	SURFACE FINISH OR BETTER ∇ 125	"THIS DOCUMENT AND ALL INFORMATION CONTAINED OR IMPLIED HERIN IS THE PROPERTY OF ELWOOD CORP. IT SHALL NOT BE DUPLICATED OR COMMUNICATED TO OTHERS NOR USED FOR PURPOSES OTHER THAN THOSE FOR WHICH IT WAS SPECIFICALLY FURNISHED."	

Elwood Corporation - Motors Group 2701 N. Green Bay Rd Racine, WI, U.S.A			
TITLE OUTLINE DRAWING, SF SERIES M44X-*N, O-RING FACE SEAL SPEEDTEC CONNECTORS			
SIZE B	SOLIDWORKS CAD	DWG NO 497-244-2098	
SCALE NONE	EDN 072337	SHEET 1 OF 1	

DWG NO 497-244-2098 SH 1

4

3

2

1