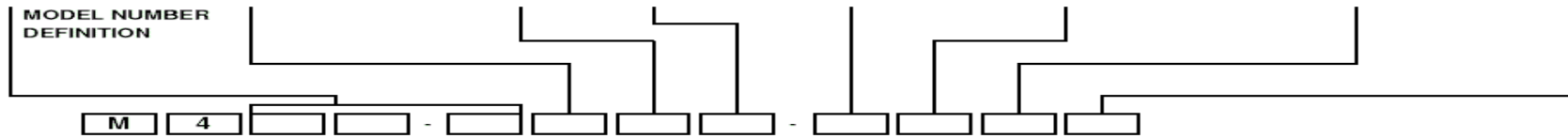
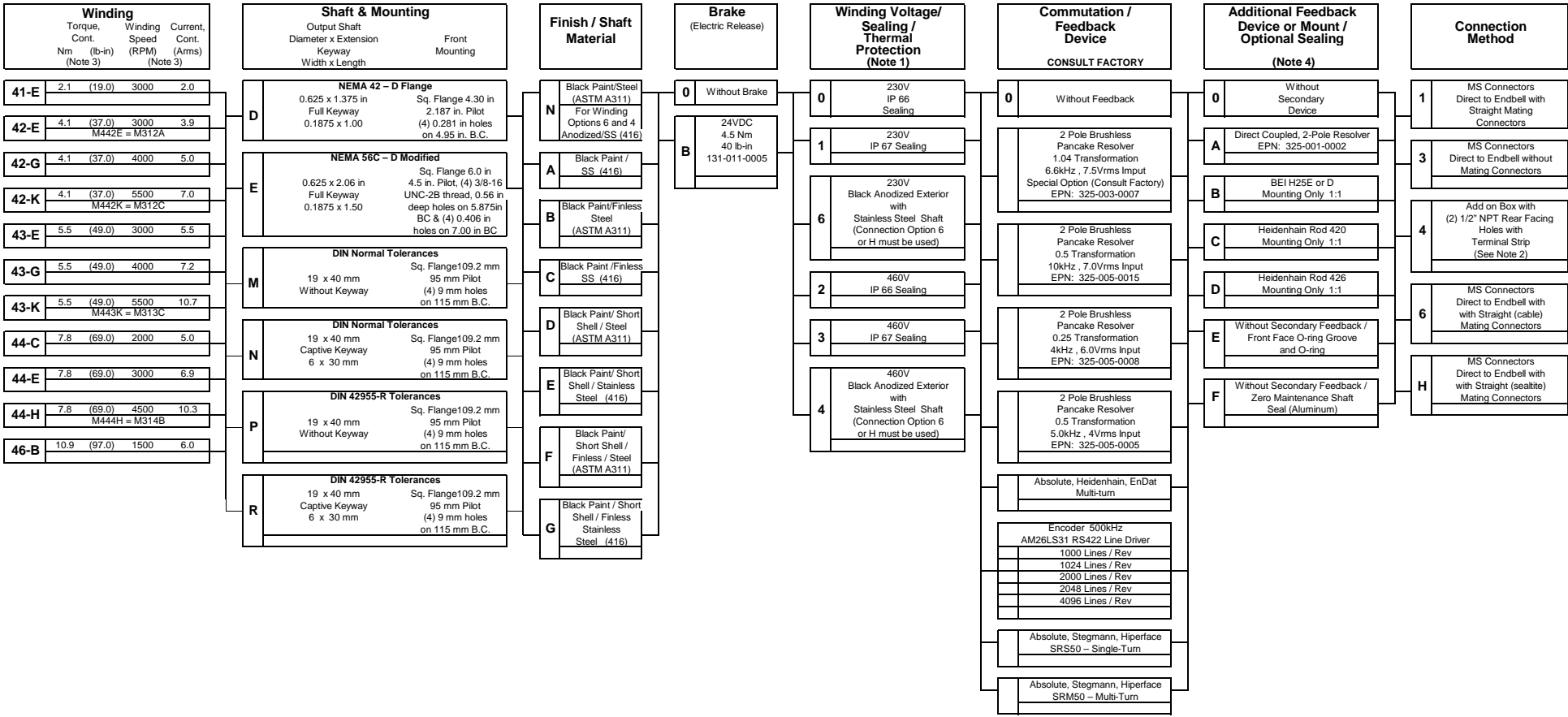


SW Series 4" Brushless AC Servo Motors
(Washdown)

(6 Pole) UL Recognized



- Notes:**
1. Thermo switch rating 155degC in motor, each winding (3), normally closed contact.
 2. Connection method option "4" will not accept a secondary resolver. Order option "1" if this is required
 3. Derate the motor continuous torque by 6% and use 1/2 listed current for 460V winding motors.
 4. All motors include standard shaft seal unless specified otherwise.

Replaces all previous pricing sheets.
All data & prices are subject to change without notice.
Rev C (04-30-15) EDN: 057249
ECO: 007753 EPN: 307-640-0106C
997-002-6475