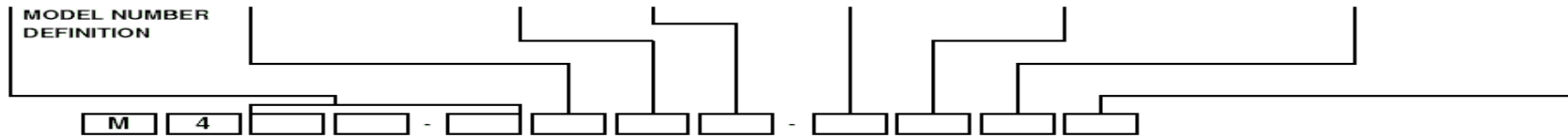
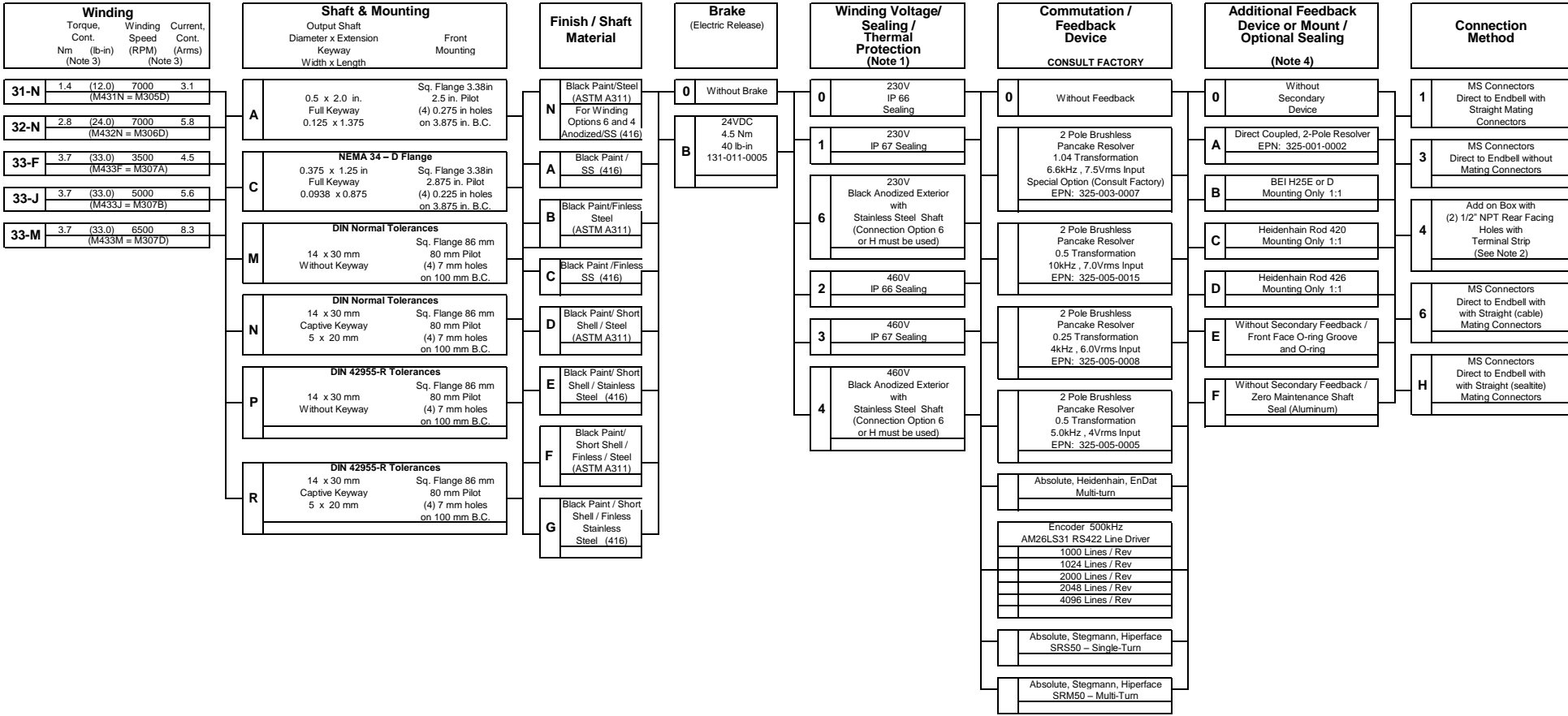


SW Series 3" Brushless AC Servo Motors

(6 Pole) I L Recognized



(Washdown)



- Notes:**
1. Thermo switch rating 155degC in motor, each winding (3), normally closed contact.
 2. Connection method option "4" will not accept a secondary resolver. Order option "1" if this is required.
 3. Derate the motor continuous torque by 6% and use 1/2 listed current for 460V winding motors.
 4. All motors include standard shaft seal unless specified otherwise.

Replaces all previous pricing sheets.
All data & prices are subject to change without notice.
Rev B (2-1-13) EDN: 057248
ECO: 006829 EPN: 307-630-0106C
997-002-6474