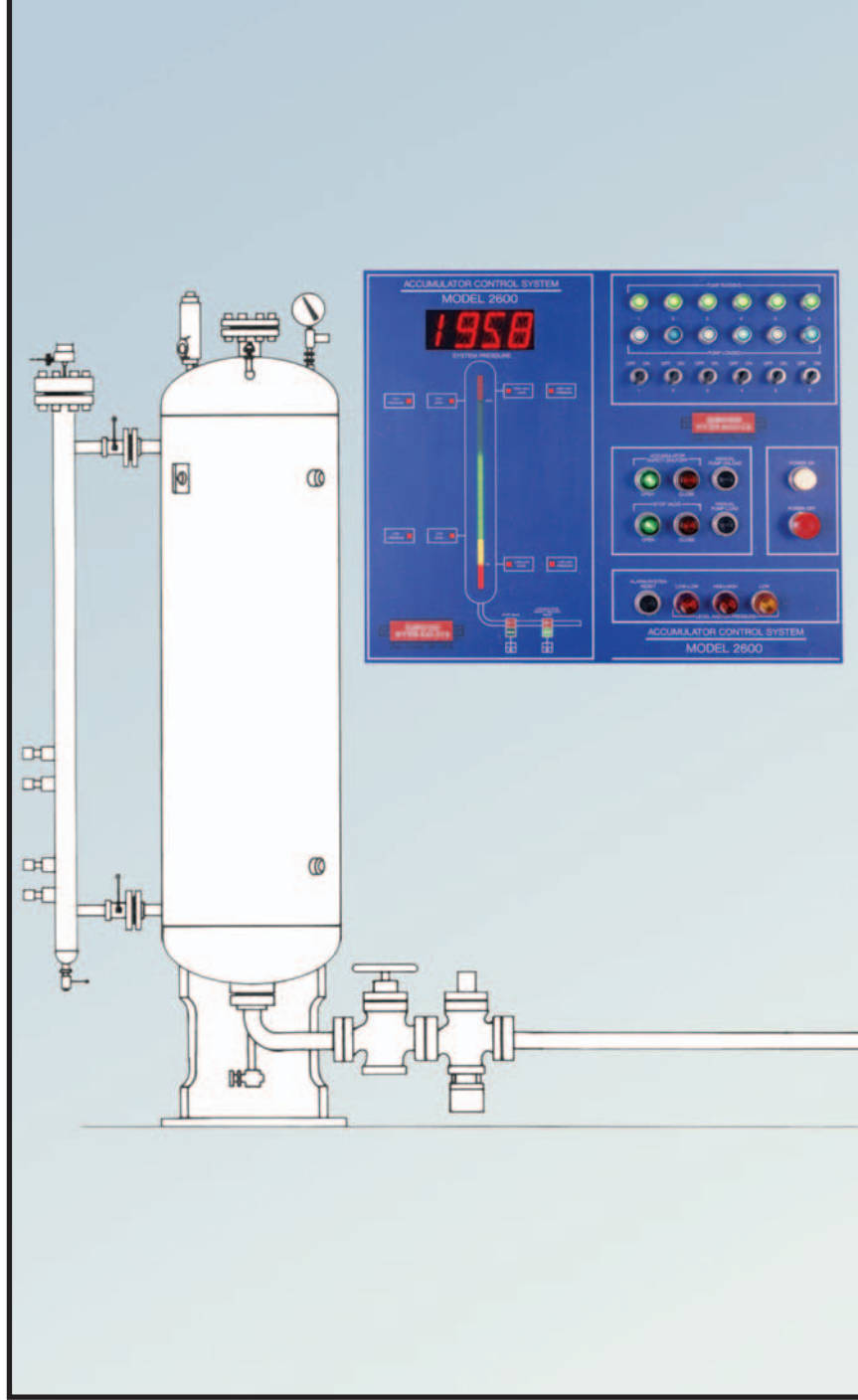


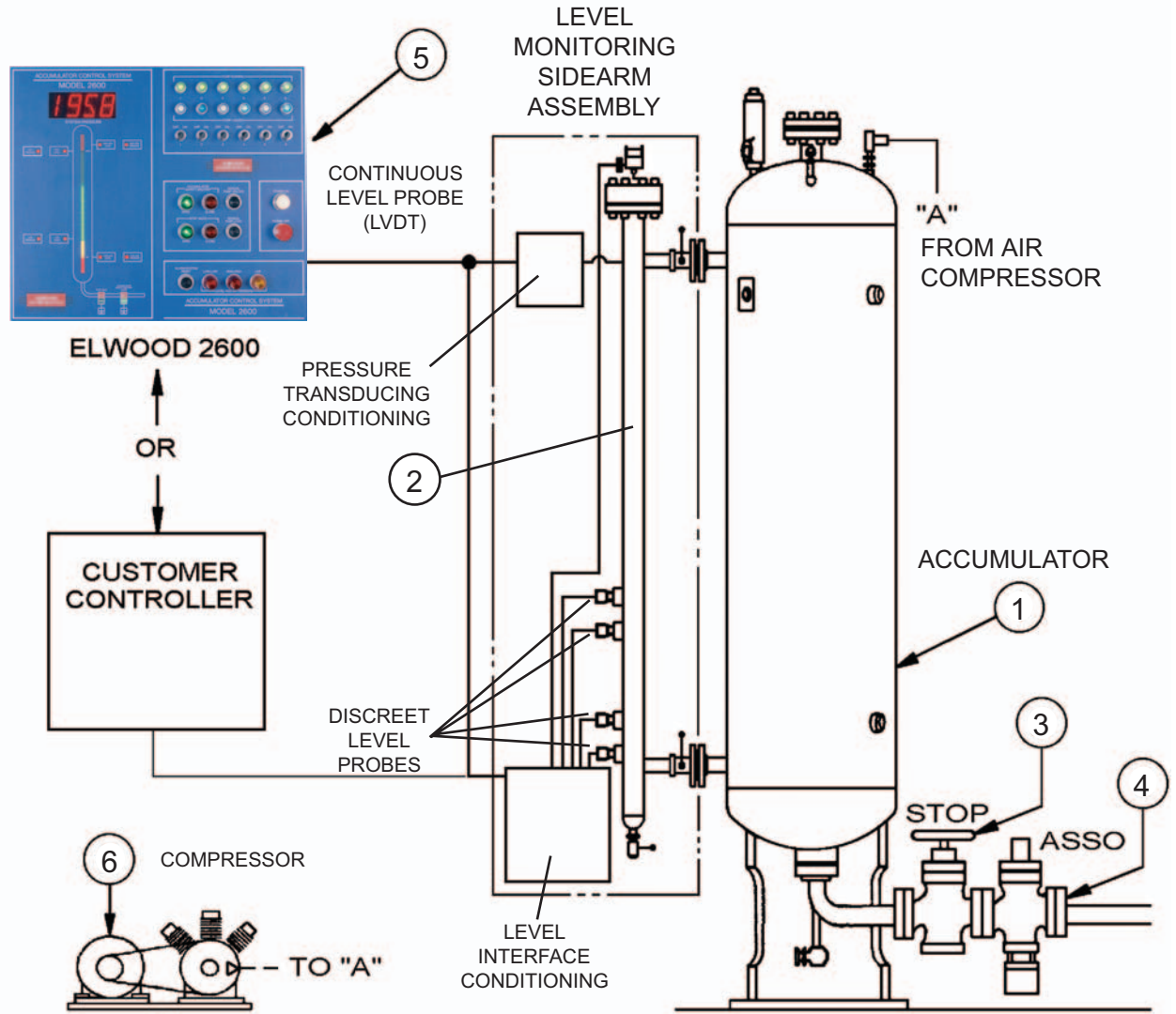
ACCUMULATOR SYSTEMS

www.elwood.com



ISO 9001:2000
CERTIFIED COMPANY

Typical Installation of Elwood Shut-Off Valve



1. ACCUMULATOR

Design and supply bottle(s), ASME code, with relief valve, rupture disc, and connections for sidearm assembly.

2. SIDEARM ASSEMBLY LEVEL INDICATOR

Provides continuous level (LVDT) and discrete probes, pressure transducer conditioning and level interface conditioning for Elwood 2600 or customer-provided controller.

3. STOP AND SHUT-OFF VALVES

Manual and hydraulic-actuated, pressures of 3000 PSI (207 Bar) and 6000 PSI (414 Bar), standard sizes 2" (50mm) to 10" (250mm), flows to 4500 GPM (17,000 L/Min.). Request Bulletin 106.

NOTE: Larger sizes and higher pressures available.

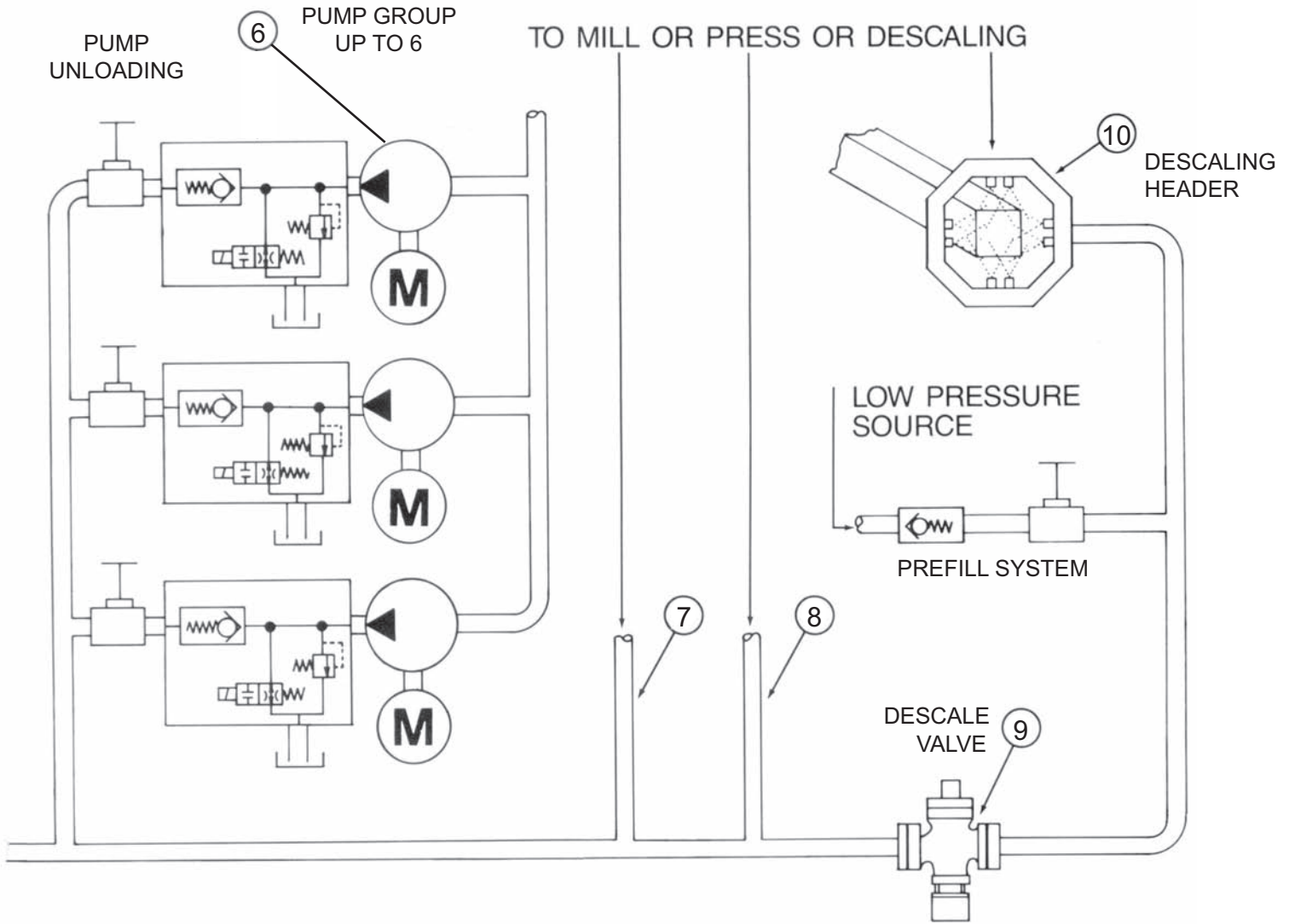
4. ACCUMULATOR SHUT-OFF VALVE

A true velocity fuse, this fail-safe device guards against loss of gas ballast and hydraulic fluid in emergency conditions. Sizes to 10" (2500mm), pressures to 6000 PSI (414 Bar), flows to 4500 GPM (17,000 L/Min.). Request Bulletins 102 and 372.

5. ACCUMULATOR CONTROL SYSTEM

Provides state of the art control for new or existing installations and is designed to interface with a main computer, when desired. Designed with a microcomputer control, the Elwood Accumulator Control regulates level by sequencing loading and unloading of main pumps.

NOTE: This unique control maximizes the usable capacity of new vessels and can increase the usable capacity of existing vessels. It displays and controls pressure, level, ballast, pump sequencing, pump status, stop valves and accumulator shut-off valve. Request Bulletin 105.



6. PUMP GROUPS

Elwood will supply pumps and compressors or work with your pump supplier and design your entire system, from pump to mill/press system or descaling header. We can supply component parts or the complete system. Our Engineering Department has overall system design capability.

7. & 8. VALVE STANDS AND SYSTEMS

Elwood can supply valve systems for your mill or press applications from our line of standard products or design special valves for your unique application.

Standard valves are available with pressures to 6000 PSI (420 BAR), 10" (250mm) size as well as flows to 4500 GPM (17,000 L/Min.). Special valves are available for forging and other presses. Elwood also supplies

electronic systems, operation consoles and industrial computer systems.

9. DESCALING VALVES

Standard sizes to 10" (250mm), pressures 3000 PSI (207 BAR) and 6000 PSI (414 BAR) with flows up to 4500 GPM (17,000 L/Min.). Request Bulletin 369.

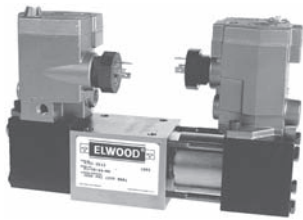
NOTE: Larger sizes and higher pressures available.

10. DESCALING HEADERS AND ENCLOSURES

Elwood will design and build descaling headers and descaling boxes to suit new and existing systems.

Packed Spool Directional Control Valves

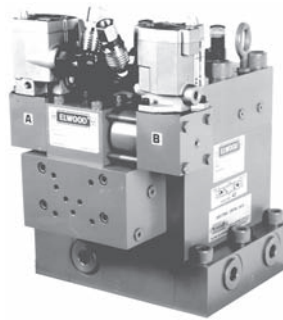
- Directional Valve for a range of applications
- Up to 46 GPM (32 GPM nominal)
- 3000 PSI (207 bar) and 6000 PSI (414 bar)



- Air Solenoid Operated
- 3-position spring centered
- 2-position spring offset
- 2-position momentary contact

Brochure 82

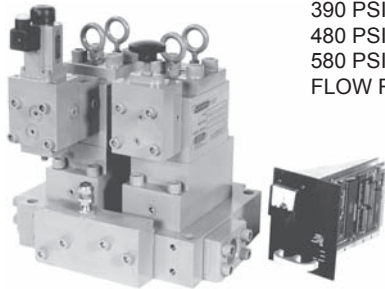
Poppet Type Directional Control Valves



- Capacities to 1600 GPM (6057 LPM)
- 3000 PSI (207 bar), 4500 PSI (310 bar) and 6000 PSI (414 bar) models are available
- Built-in flow control
- Manifold mounted, NPT, socket weld or flanged

Brochure 395

Proportional Pressure Control System



Controlled Pressure Ranges:

390 PSI (27 bar) to 1500 PSI (103 bar)
 480 PSI (33 bar) to 3000 PSI (207 bar)
 580 PSI (40 bar) to 6000 PSI (414 bar)
 FLOW RATE: To 1000 GPM (3785 LPM)

Brochure 104

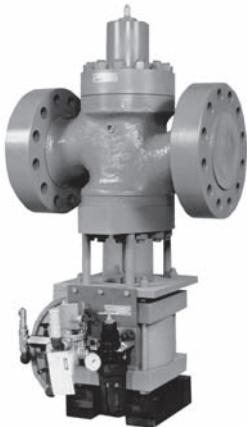
Modular ISO-Lock

- Isolates manifold mounted directional control valves
- Reduces maintenance time - replace Directional Valves without depressureizing and draining hydraulic system.
- Single lever operation to close all four ports (P, T, A, B). Cylinders can remain under the external load without having to be blocked.
- Lockable per OSHA safety standard
- NFPA "DO"/CETOP and special mounting patterns available



Brochure 250

Descaling & Pump Unloading Valves



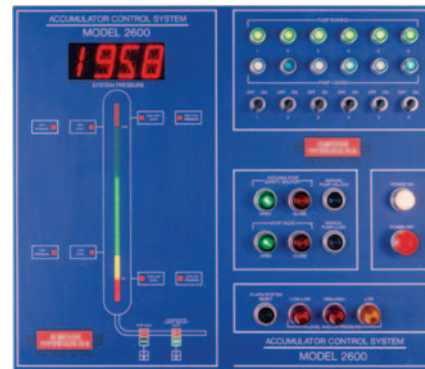
Capacities:

3000 PSI (207 bar)
 6000 PSI (414 bar)
 6000 GPM (22710 LPM)

Connection Sizes: 1-1/4" to 10"

Descaling Valves - Spindle – Brochure 2218
 DIN – Brochure 2219

Accumulator Systems



- Descaling
- Mill Systems
- Presses
- Controls
 - Level
 - Pressure
 - Pump Sequencing
 - Ballast Charging
- Designed to your specifications

Brochures 105, 380 & 102



ELWOOD CORPORATION
 195 West Ryan Road • Oak Creek, Wisconsin 53154 • USA
Phone: 800-527-7500 • **Fax:** 414-764-4298
 www.elwood.com

3/06 - Brochure 380
 Rev. A
 Printed in the U.S.A