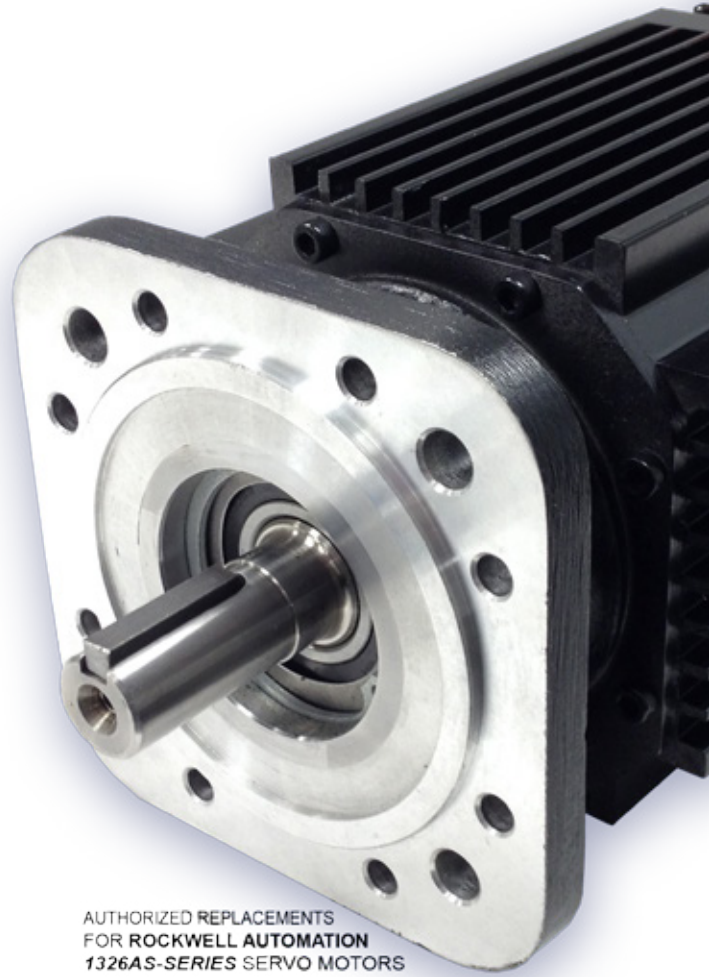


1326AS-SERIES 460V^{SERVO}MOTORS

www.elwood.com



AUTHORIZED REPLACEMENTS
FOR ROCKWELL AUTOMATION
1326AS-SERIES SERVO MOTORS

ELWOOD[®] **HIGH PERFORMANCE**
MOTORS
SERVOS - STEPPERS

ISO 9001
CERTIFIED COMPANY

Rockwell
Automation
Encompass[™]
Product Partner
Americas

ELWOOD 1326AS-SERIES SERVO MOTORS

FORM, FIT, FUNCTION REPLACEMENTS FOR 1326AS-SERIES MOTORS FROM ROCKWELL AUTOMATION

- TRUE DROP-IN COMPATABILITY
- USE THE SAME MOTOR DATA FILES
- IDENTICAL WINDINGS AND INERTIA
- IDENTICAL MOUNTING & CONNECTORS
- NO SOFTWARE MODIFICATIONS
- NO HARDWARE MODIFICATIONS



1326AS-SERIES MOTOR DATA

MOTOR MODEL		1326AS-B310H	1326AS-B330H	1326AS-B420G	1326AS-B440G	1326AS-B460F	1326AS-B630F	1326AS-B660E	1326AS-B690E
MECHANICAL DATA (1)									
Rated Torque, Cont (Stall)	Nm	0.7	2.1	3.2	6.4	9.0	10.7	21.5	36.4
	lb-in	6.1	18.0	28.0	56.0	80.0	95.0	190.0	322.0
Peak Torque (Stall)	Nm	2.1	5.6	7.3	19	21.9	25.4	54.2	79.1
	lb-in	18	50	65	168	194	225	480	700
Rated Current	A _{0-PK}	0.8	2.1	2.6	5.4	6.2	7.8	11.8	19.0
Rated Power	kW	0.3	0.9	1.2	2.0	2.8	2.4	3.4	5.0
	hp	0.4	1.2	1.6	2.7	3.8	3.2	4.6	6.7
Rated Voltage (Drive Supply)	V _{rms}	460	460	460	460	460	460	460	460
Rotor Moment of Inertia	kg-m ²	0.00045	0.0001	0.0003	0.0005	0.00075	0.0014	0.0025	0.0036
	lb-in-s ²	0.0004	0.0008	0.0027	0.0046	0.0066	0.012	0.022	0.032
Rotor Moment of Inertia Brake Motors	kg-m ²	0.00004	0.0001	0.0004	0.0006	0.0008	0.0015	0.0026	0.0037
	lb-in-s ²	0.00037	0.00087	0.0034	0.0053	0.0073	0.019	0.029	0.039
Motor Shipping Weight	kg	2.8	4.3	8.1	11.7	13.8	18.3	26.9	34.8
	lb	6.2	9.5	17.8	25.7	30.4	40.3	59.2	76.6
Motor Shipping Weight Brake Motors	kg	4.3	5.8	10.1	13.7	15.8	21.3	29.9	37.8
	lb	9.5	12.8	22.2	30.1	34.8	46.9	65.8	83.2
Damping	Nm/krpm	0.01	0.01	0.02	0.03	0.03	0.06	0.06	0.07
	lb-in/krpm	0.1	0.1	0.2	0.2	0.3	0.5	0.6	0.6
Friction Torque	Nm	0.01	0.02	0.04	0.06	0.08	0.12	0.15	0.17
	lb-in	0.1	0.2	0.3	0.5	0.7	1.1	1.3	1.5
Max. Operating Speed	rpm	6200	6500	5250	5250	4300	4500	3000	3000
WINDING DATA (1)									
Poles		6	6	6	6	6	8	8	8
K _t , Sine Wave Torque Constant (2)	Nm/A _{0-PK}	0.74	0.74	0.88	0.88	1.12	1.58	2.09	2.16
	lb-in/A _{0-PK}	6.51	6.51	7.85	7.85	9.90	13.98	18.5	19.12
K _e , Voltage Constant (4)	V/krpm	89.1	89.1	107.5	107.5	135.7	135.7	184.7	184.7
Winding Resistance Phase to Phase at 25±5°C	Ohms ±15%	52.4	10.2	6.9	2.5	2.2	1.1	0.76	0.56
Winding Inductance Phase to Phase	mH	72.0	24.0	27.0	10.0	12.0	9.5	8.6	5.8
Thermal Resistance	°C/Watt	0.93	0.79	0.84	0.49	0.39	0.25	0.22	0.20
(1) Specifications are at 25°C unless otherwise noted.					(3) Peak value of per phase square wave Amperes				
(2) Peak value of per phase sine wave Amperes					(4) Volts 0-peak, Line-Line / KRPM				

STORAGE AND OPERATING CONDITIONS

Ambient Temperature	Operating: 0° to 40°C (32° to 104°F) Storage: -30° to 70°C (-25° to 158°F)
Relative Humidity	5% to 95% non-condensing

THERMOSTAT RATINGS

Rated Voltage	0-250 Volts DC or 50/60 Hz AC*
Rated Current	2.5 Amps @ Power Factor of 1.0
	1.6 Amps @ Power Factor of 0.6
Maximum Switching Current	5 Amps
Contact Resistance	<0.10 Ohms maximum
Contacts	Normally closed
Insulation Dielectric	Mylar Nomex capable of withstanding 1500 VAC RMS 50/60 Hz for 1 minute
Opening Temperature (+/- 5° C)	140° C

*The thermostat is normally used as a switch for a 15VDC logic signal.



ELWOOD CORPORATION - MOTORS GROUP
2701 NORTH GREEN BAY ROAD
RACINE, WI 53404

phone: 262-637-6591
fax: 414-764-4298
email: info@elwood.com



www.elwood.com