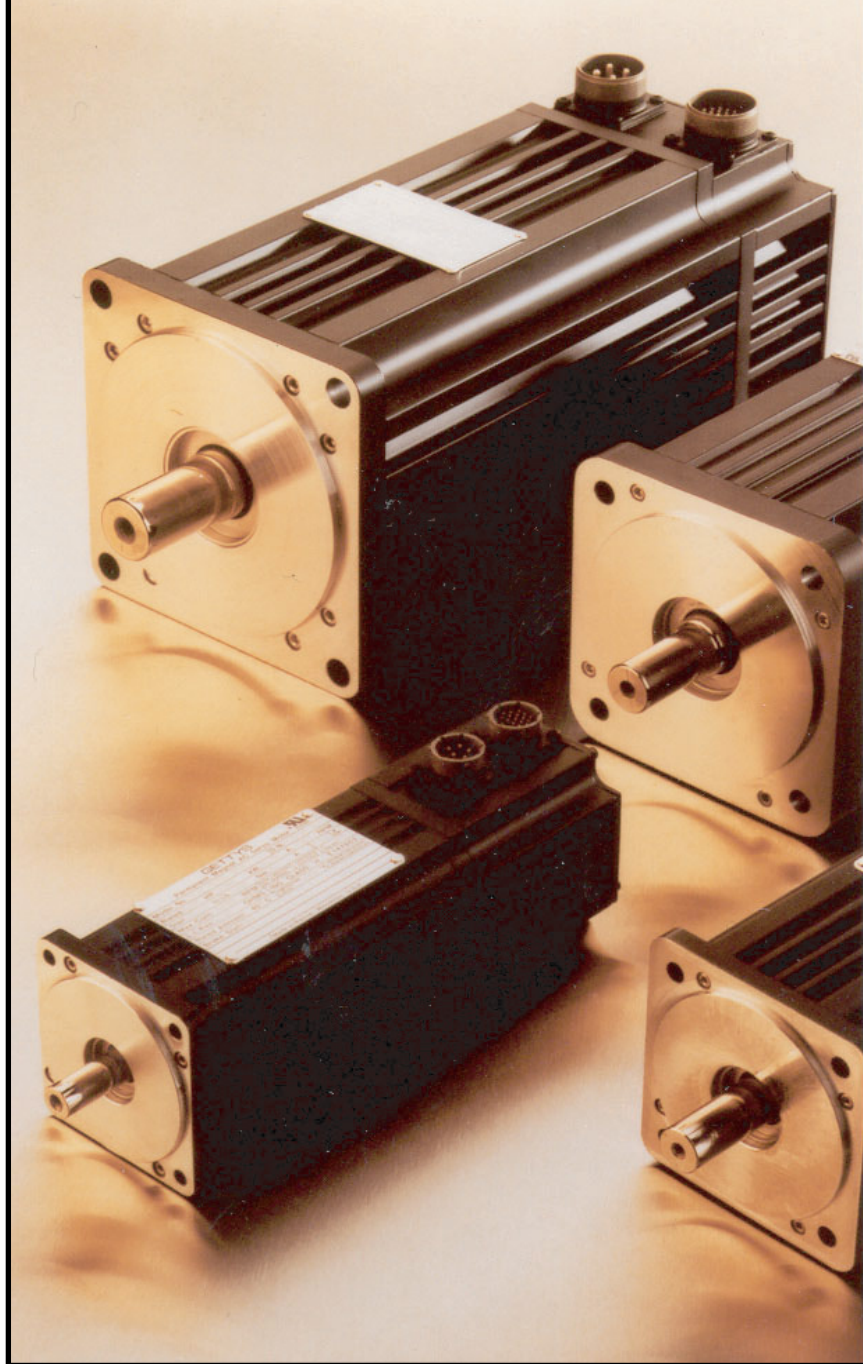


# RUGGED INDUSTRIAL MOTORS

[www.elwood.com](http://www.elwood.com)



**ELWOOD<sup>®</sup>** HIGH PERFORMANCE  
**MOTORS**  
SERVOS - STEPPERS

ISO 9001  
CERTIFIED COMPANY

# SERVO S

## Standard Features:

- Proven, Rugged Design for Long Life in Demanding Industrial Environments
- 2", 3", 4", 6", 7" Frame Sizes
- Sealed for Repeated High-Pressure Wash Down
- 230v and 460v Windings
- Resolver or Incremental Encoder Feedback

## SW SERIES

### WASH DOWN SERVO

Extremely rugged design for demanding environments such as automotive and machine tool industries. Proven long life.



- 2, 3, 4, 6, & 7" Frame Sizes
- 0.6 Nm to 50 Nm Cont. Torque Range
- Sealing for High-Pressure Wash Down
- 115V / 230V / 460V Windings
- Resolver Encoder Feedback
- English, Metric or NEMA Mounting

[www.elwood.com/sw](http://www.elwood.com/sw)

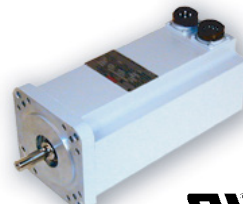
## Optional Features:

- Absolute Feedback; High-Resolution, Multi-Turn
- Sealing for Temporary Immersion (1m depth)
- Spring-Set Electromechanical Brake
- English, NEMA, DIN, and **Custom** Mounting
- **Custom** Shafts, Keyways, Mounting Flanges
- Cable Assemblies, connectors to specification

## SF SERIES

### FOOD-GRADE SERVO

Designed specifically for the food and baking industries. Capable of withstanding repeated high pressure wash down. Smooth housing to minimize entrapment areas.



- 2, 3, 4 & 6" Frame Sizes
- Finless Housing, Stainless Shafts
- FDA-Approved Epoxy Coating
- 0.6 Nm to 50 Nm Cont. Torque Range
- Sealing for High Pressure Wash Down
- 115V / 230V / 460V Windings
- English, Metric or NEMA Mounting

[www.elwood.com/sf](http://www.elwood.com/sf)

## W SERIES

### ALL-STAINLESS STEEL SERVO

All Stainless Steel servo motors for food, beverage, pharmaceutical, hygienic, and caustic washdown applications.



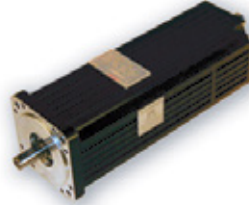
- 70, 100, 125mm Diameter Housings
- 0.5 Nm to 7.5 Nm Cont. Torque Range
- 300 Series Stainless Steel Exterior
- Sealing for Washdown Applications
- Teflon or Viton Shaft Seals
- Feedback Options for Most Controls
- Custom Mounting & Shafts Available

[www.elwood.com/W-Series.html](http://www.elwood.com/W-Series.html)

## SX SERIES

### EXPLOSION-PROOF SERVO

Ideal for hazardous locations where dust, vapors, or gases form potentially flammable or explosive environments. Can be applied virtually worldwide.



- 3, 4, 6 & 7" Sizes UL/cUL Listed:
  - Class I Div 1 & 2, Groups C, D
  - Class II Div 1 & 2 Groups E, F, G
- 3, 4, & 6" Sizes: ATEX Ex d IIB T3
- 3" Sizes: ATEX/IECEx Ex tb IIIC T135°C
- 1.2 Nm to 36 Nm Cont. Torque Range
- Feedback Options for Most Controls
- English, Metric or NEMA Mounting

[www.elwood.com/sx](http://www.elwood.com/sx)

## H SERIES

### LOW INERTIA SERVO

Authorized replacements for Rockwell Automation's H, S, W, and 1326AS Series servo motors. True drop-in, mechanically and electrically identical to originals.



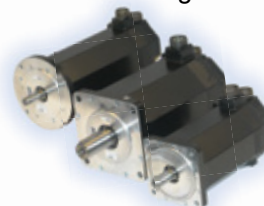
- Rockwell Automation Encompass Partner
- H-3000, H-4000, & H-6000 Sizes Available
- Identical Performance to Originals
- OEM Components, Available Indefinitely
- Rebuilds Available Regardless of Original Manufacturer
- Cable Sets for All Drive Platforms

[www.elwood.com/H-Series.html](http://www.elwood.com/H-Series.html)

## F SERIES

### MEDIUM INERTIA SERVO

Authorized replacements for Rockwell Automation's F-Series servo motors. True drop-in, mechanically and electrically identical to originals. Medium inertia to match heavy loads.



- Rockwell Automation Encompass Partner
- F-4000 & F-6000 Sizes Available
- Identical Performance to Originals
- OEM Components, Available Indefinitely
- Rebuilds Available Regardless of Original Manufacturer
- Cable Sets for All Drive Platforms

[www.elwood.com/F-Series.html](http://www.elwood.com/F-Series.html)

## Standard Features:

- NEMA Standard Mounting Dimensions
- 1.8° Hybrid Design
- 18" Shielded Cable (Except RS-Series)
- Single or Double Shaft
- IP66 sealing (Except RS-Series)

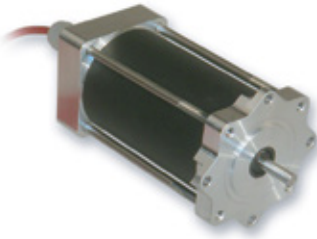
## Optional Features:

- Incremental Optical Encoders
- Extended Shielded Cables
- Connectors (MS or Header)
- Custom Shafts, Keyways, Mounting Flanges, etc.

## WS SERIES

### WASH-DOWN STEPPER

Economical step motor technology sealed to withstand repeated high pressure washdowns.



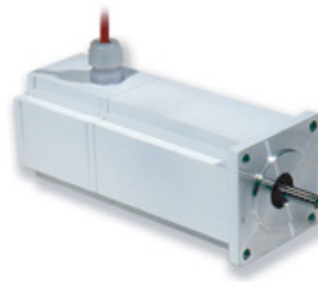
- NEMA 23 & 42 Frames
- Rugged design
- 45 OZ-IN (0.31 Nm) to 1600 OZ-IN (11.3 Nm) Torque Range (Unipolar)
- Rugged, Reliable Design
- Feedback Options Available

[www.elwood.com/gettys\\_wd.shtml](http://www.elwood.com/gettys_wd.shtml)

## FS SERIES

### FOOD-GRADE STEPPER

Sealed to withstand repeated high pressure washdowns. Smooth housing and special fittings minimize potential entrapment areas for food processing and baking applications.



- NEMA 23 and 34 Frames
- Finless aluminum housing
- FDA-approved white coating
- Stainless steel hardware
- 45 OZ-IN (0.31 Nm) to 450 OZ-IN (3.17 Nm) Torque Range (Unipolar)
- Feedback Options Available
- All Stainless Steel Version Available (NEMA 23 Only)

[www.elwood.com/gettys\\_fg.shtml](http://www.elwood.com/gettys_fg.shtml)

## RS SERIES

### STANDARD STEPPER

Proven, reliable design for demanding industrial environments. Custom options available for unique requirements.



- NEMA 23, 34 and 42 Frames
- 12" Flying Leads
- Rugged design
- 45 OZ-IN (0.31 Nm) to 1600 OZ-IN (11.3 Nm) torque range
- Feedback Options Available
- Connector Options Available
- Custom Housings, Mountings, Shafts Available

[www.elwood.com/gettys\\_rs.shtml](http://www.elwood.com/gettys_rs.shtml)

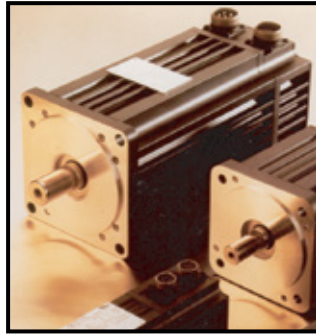


**ELWOOD**® HIGH PERFORMANCE  
**MOTORS**  
SERVOS - STEPPERS

**ELWOOD HIGH PERFORMANCE MOTORS**  
2701 North Green Bay Road • Racine, Wisconsin 53404  
Phone: (800) 558-9489 • Fax: (414) 764-4298  
email: [info@elwood.com](mailto:info@elwood.com) web: [www.elwood.com/motors](http://www.elwood.com/motors)

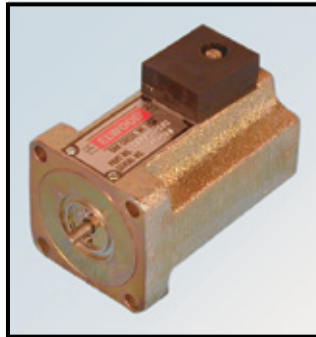
**ELWOOD** HIGH PERFORMANCE  
SERVOS - STEPPERS

High performance stepper and servo motor products for harsh industrial environments, tailored to specific requirements.



**ELWOOD** ELECTRONICS  
Automation • Controls • Control Systems

Linear proportional solenoids for all industrial applications.



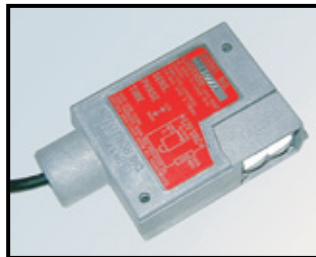
**ELWOOD** FLUID  
POWER

Full line of directional and pressure control valves for water and low viscosity fluid applications, serving many diverse industries.



**ELWOOD** Autotron  
PHOTOELECTRIC CONTROLS

Complete selection of industrial photo electric equipment from miniature to rugged die cast.



**ELWOOD** HIGH PERFORMANCE  
**MOTORS**  
SERVOS - STEPPERS

ELWOOD HIGH PERFORMANCE MOTORS  
2701 North Green Bay Road  
Racine, WI, 53404, USA  
phone: 262-637-6591 fax: 414-764-4298  
email: info@elwood.com  
web: www.elwood.com/motors



www.elwood.com

10/13 2201  
Rev. D  
Printed in USA