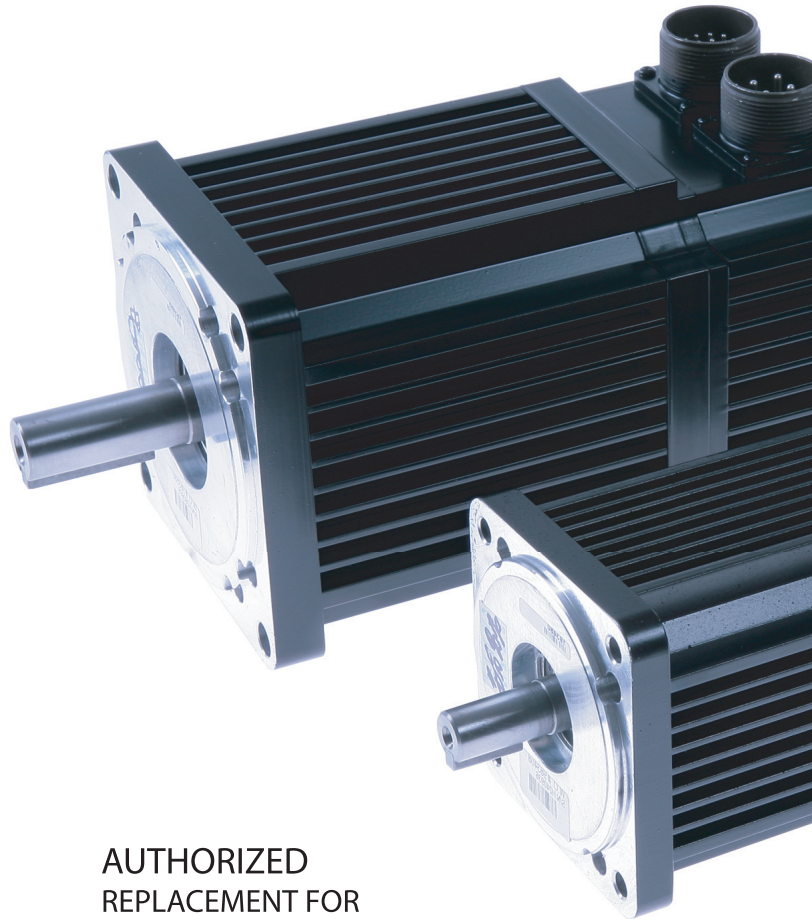


H-SERIES SERVO MOTORS

www.elwood.com



AUTHORIZED
REPLACEMENT FOR
ROCKWELL AUTOMATION H-SERIES

ELWOOD[®] **HIGH PERFORMANCE**
MOTORS
SERVOS - STEPPERS

ISO 9001
CERTIFIED COMPANY

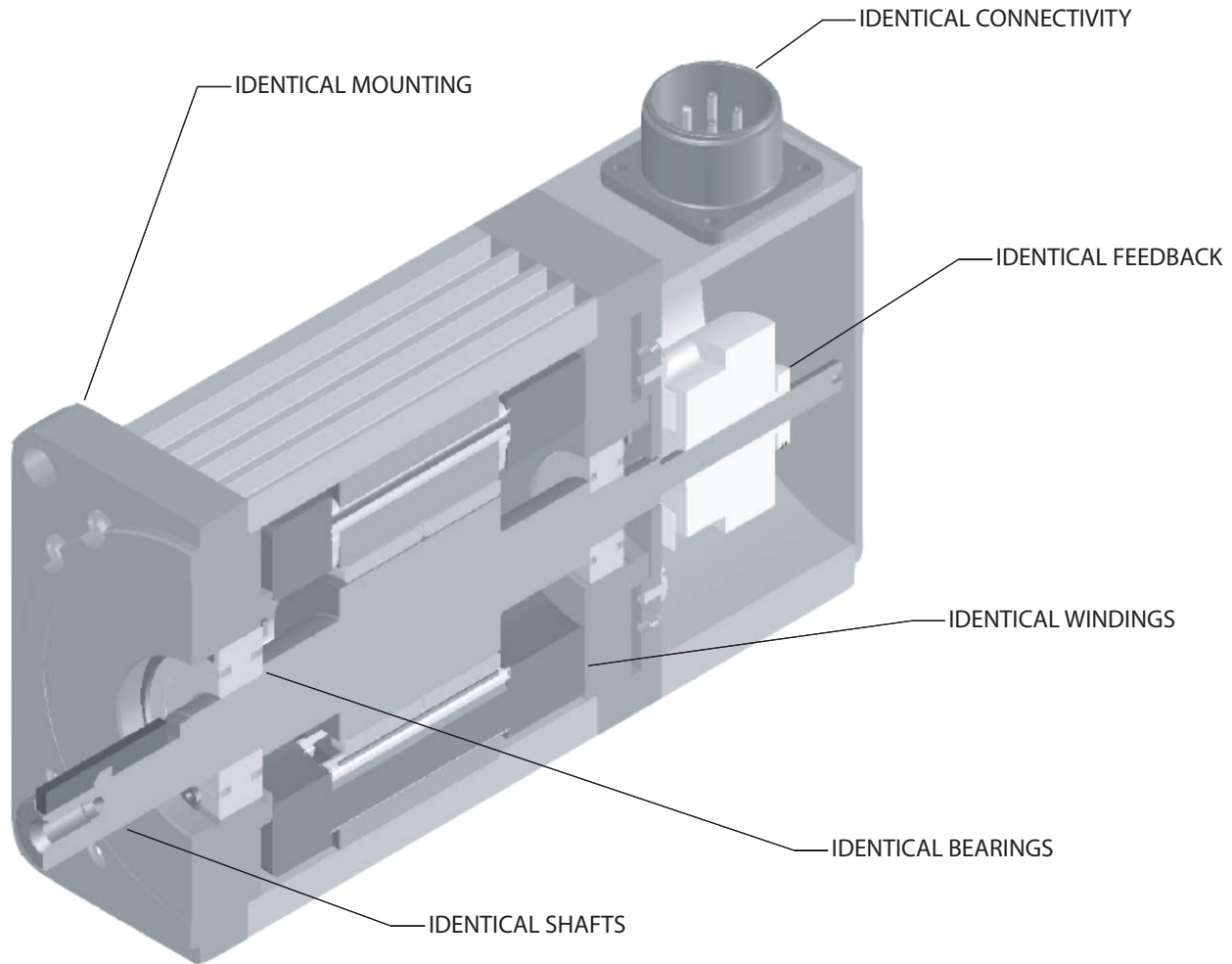
Rockwell
Automation

Encompass[™]
Product Partner

Americas

ELWOOD H-SERIES SERVO MOTORS

AUTHORIZED REPLACEMENTS FOR ROCKWELL AUTOMATION
H-SERIES, 1326AS, & W-SERIES (ALL STAINLESS)



CAPABILITIES:

- TRUE DROP-IN REPLACEMENT FOR ROCKWELL/
RELIANCE/ELECTRO-CRAFT H-SERIES MOTORS
- FRAME SIZES, TO REPLACE:
 - H-3000, H-4000, H-6000
 - 1326AS-B3, 1326AS-B4, 1326AS-B6
 - W-3000, W-4000
- IDENTICAL SETUPS, IDENTICAL PERFORMANCE
- ORIGINAL EQUIPMENT COMPONENTS:
SHAFTS, WINDINGS, BEARINGS,
ENCODERS, CONNECTORS
- ALSO REPLACES G&L HSM AND SSM

FEATURES:

- SPEEDS TO 6000 RPM
- CONTINUOUS TORQUE
FROM 5 TO 325 lb-in
- PEAK TORQUE TO 700 lb-in
- SPRING-SET HOLDING BRAKES (OPTIONAL)
- NEODYMIUM-IRON-BORON MAGNETICS
- LOW INERTIA, HIGH-ACCELERATION
- NO OBSOLESCENCE

REBUILDS:

- REBUILT TO AS-NEW CONDITION
REGARDLESS OF ORIGINAL MANUFACTURER

H-SERIES MOTOR DATA

MOTOR MODEL		H-2005	H-3007	H-3016	H-4030-P	H-4030-M	H-4050	H-4075	H-6100	H-6200	H-6300	
MECHANICAL DATA(1)												
Rated Torque	Nm	0.6	0.8	2.3	3.4	3.4	6.8	10.2	11.3	22.6	36.7	
	lb-in	5.0	7.0	20.0	30.0	30.0	60.0	90.3	100.0	200.0	324.8	
Peak Torque	Nm	1.2	2.5	5.0	8.2	6.8	21.5	30.5	25.42	40.67	79.1	
	lb-in	11.0	21.9	44.0	72.6	60.0	190.0	269.9	225.0	360.0	700.1	
Rated Current	Arms	3.6	2.5	6.8	5.7	12.0	12.0	12.0	17.0	32.0	46.0	
Rated Power	kW	0.3	0.35	0.75	1.1	1.1	1.9	2.6	2.5	3.4	5.1	
Rated Voltage	Vrms	230	230	230	230	230	230	230	230	230	230	
Rotor Moment of Inertia	kg-m ²	0.000015	0.000030	0.000080	0.000250	0.000250	0.000460	0.000680	0.001400	0.002400	0.003400	
	lb-in-s ²	0.00013	0.00027	0.00072	0.00220	0.00220	0.00410	0.00600	0.01200	0.02100	0.03000	
Brake Motors	kg-m ²	n/a	0.000038	0.000089	0.000330	0.000330	0.000540	0.000760	0.001700	0.002700	0.003700	
Rotor Moment of Inertia	lb-in-s ²	n/a	0.00034	0.00079	0.00290	0.00290	0.00480	0.00670	0.01500	0.02400	0.03300	
Motor Weight	Net	kg/lb	2.6/7.0	2.6/7.0	4.1/11.0	6.8/18.2	6.8/18.2	9.7/26.0	12.9/34.6	18.3/49.0	27.0/72.3	34.8/93.2
	Shipping	kg/lb	3.2/8.6	3.2/8.6	4.7/12.6	7.3/19.6	7.3/19.6	10.9/29.2	14.1/37.8	19.2/51.4	28.6/76.6	37.7/101.0
Brake Motor Weight	Net	kg/lb	n/a	3.4/9.1	4.9/13.1	8.8/23.6	8.8/23.6	11.8/31.6	14.9/39.9	22.5/60.3	31.6/84.7	39.2/105.0
	Shipping	kg/lb	n/a	3.8/10.2	5.5/14.7	9.4/25.2	9.4/25.2	12.7/34.0	16.0/42.9	23.8/63.8	32.9/88.1	42.2/113.1
Damping	Nm/krpm	0.007	0.010	0.014	0.034	0.034	0.045	0.068	0.100	0.160	0.190	
	lb-in/krpm	0.06	0.09	0.12	0.3	0.3	0.4	0.6	0.9	1.4	1.7	
Friction Torque	Nm	0.014	0.014	0.028	0.034	0.034	0.068	0.140	0.140	0.240	0.360	
	lb-in	0.12	0.12	0.25	0.3	0.3	0.6	1.2	1.2	2.1	3.2	
Max. Operating Speed	rpm	6000	5000	5000	4000	4000	4000	3000	3000	3000	3000	
WINDING DATA (1)												
Poles	#	4	6	6	6	6	6	6	8	8	8	
Sine Wave K _T	Nm/A	0.13	0.28	0.28	0.5	0.25	0.5	0.74	0.68	0.66	0.7	
Torque Constant (2)	lb-in/A	1.2	2.5	2.5	4.4	2.2	4.4	6.6	6.0	5.8	6.2	
Square Wave K _T	Nm/A	0.14	0.31	0.31	0.54	0.27	0.54	0.81	0.74	0.72	0.77	
Torque Constant (3)	lb-in/A	1.3	2.7	2.7	4.8	2.4	4.8	7.2	6.6	6.4	6.8	
KE Voltage Constant (4)	V/krpm	16	34	34	60	30	60	90	82	80	85	
Winding Resistance (Phase to Phase at 25°C)	Ohms	2.60	6.60	1.30	2.00	0.50	0.69	0.90	0.49	0.18	0.12	
	±10%											
Winding Inductance (Phase to Phase)	mH	4.1	12.0	3.4	9.0	1.9	3.3	5.4	4.4	2.2	1.2	
Thermal Resistance	°C/Watt	1.45	1.2	0.89	0.79	0.79	0.57	0.48	0.34	0.31	0.24	
Dielectric Rating	Power Leads (R,S,T) to Ground: 1500 VACrms 50/60 Hz for 1 minute											
(1) Specifications are at 25°C unless otherwise noted.						(3) Peak value of per phase square wave Amperes						
(2) Peak value of per phase sine wave Amperes						(4) Peak value of sinusoidal phase to phase Volts						
STORAGE AND OPERATING CONDITIONS												
Ambient Temperature	Operating: 0 to 40 °C (32 to 104°F) Storage: -30 to 70 °C (-25 to 158°F)											
Relative Humidity	5% to 95% non-condensing											



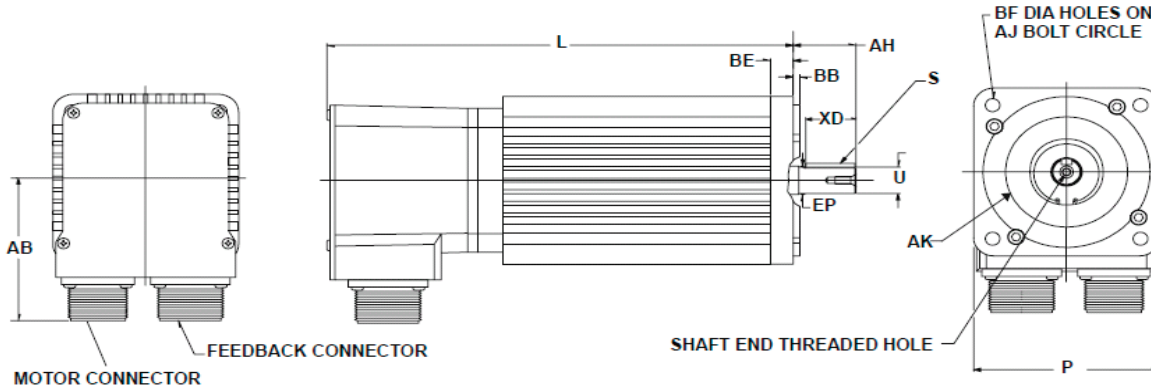
ELWOOD CORPORATION - GETTYS GROUP
2701 NORTH GREEN BAY ROAD
RACINE, WI 53404

phone: 262-637-6591
fax: 414-764-4298
email: info@elwood.com



www.elwood.com

H-SERIES DIMENSIONAL DATA



Motor Model	AB	AH	AJ	AK	BB	BE	BF	EP	L	L Brake	P	S	U	XD
	mm/in	mm/in	mm/in	mm/in	mm/in	mm/in	mm/in	mm/in	mm/in	mm/in	mm/in	mm/in	mm/in	mm/in
H-2005	75/2.95	23/0.93	75/2.95	60/2.36	2.4/0.09	15.2/0.60	5.8/0.23	12/0.47	197/7.7	-	80/3.15	4x4/16x.16	11/0.43	18/0.71
H-3007	75/2.95	30/1.18	100/3.94	80/3.15	3/0.12	10.9/0.43	7/0.28	15/0.59	172/6.77	211/8.31	89/3.50	5x5/20x.20	14/0.55	20/0.79
H-3016	75/2.95	30/1.18	100/3.94	80/3.15	3/0.12	10.9/0.43	7/0.28	15/0.59	223/8.77	262/10.31	89/3.50	5x5/20x.20	14/0.55	20/0.79
H-4030	76/3.00	50/1.97	145/5.71	110/4.33	3/0.12	15.5/0.61	10/0.39	20/0.79	213/8.39	266/10.45	121/4.76	6x6/24x.24	19/0.75	40/1.57
H-4050	76/3.00	50/1.97	145/5.71	110/4.33	3/0.12	15.5/0.61	10/0.39	20/0.79	264/10.39	317/12.48	121/4.76	6x6/24x.24	19/0.75	40/1.57
H-4075	76/3.00	50/1.97	145/5.71	110/4.33	3/0.12	15.5/0.61	10/0.39	20/0.79	315/12.40	368/14.49	121/4.76	6x6/24x.24	19/0.75	40/1.57
H-6100	101/4.00	80/3.15	200/7.87	114.3/4.50	4/0.16	21.3/0.84	13.5/0.53	38/1.50	277/10.91	330/12.99	178/7.01	10x8/39x.31	35/1.38	60/2.36
H-6200	101/4.00	80/3.15	200/7.87	114.3/4.50	4/0.16	21.3/0.84	13.5/0.53	38/1.50	353/13.90	406/15.98	178/7.01	10x8/39x.31	35/1.38	60/2.36
H-6300	101/4.00	80/3.15	200/7.87	114.3/4.50	4/0.16	21.3/0.84	13.5/0.53	38/1.50	429/16.89	482/17.40	178/7.01	10x8/39x.31	35/1.38	60/2.36

CABLES FOR H/F-SERIES MOTORS CONTINUOUS FLEX RATED*

*Elwood's continuous flex rated cables replace both flexing and non-flexing cables for H and F Series motors.

Power Cables		"XXX" indicates length in feet			
	H-2000 & H-3000	H-4000	H-6100 & H-6200	H-6300	
Rockwell Model	9101-1381 2090-UXNPAHF-16S	9101-1382 2090-UXNPAHF-14S	9101-1383 2090-UXNPAHF-10S	9101-1399 2090-UXNPAHF-8S	
Elwood Model	141-HPXXX-01	141-HPXXX-02	141-HPXXX-03	141-HPXXX-04	

Feedback Cables		"XXX" indicates length in feet	
	Ultra 100/200	Ultra 3000	
Rockwell Model	9101-1366	2090-UXNFBHF-S	
Elwood Model	141-HFXXX-01	141-HFXXX-02	

Brake Cables		"XXX" indicates length in feet	
	For All Ultra Drives		
Rockwell Model	n/a		
Elwood Model	141-HBXXX-01		

