

GS-SERIES VALVES

The Elwood GS-Series

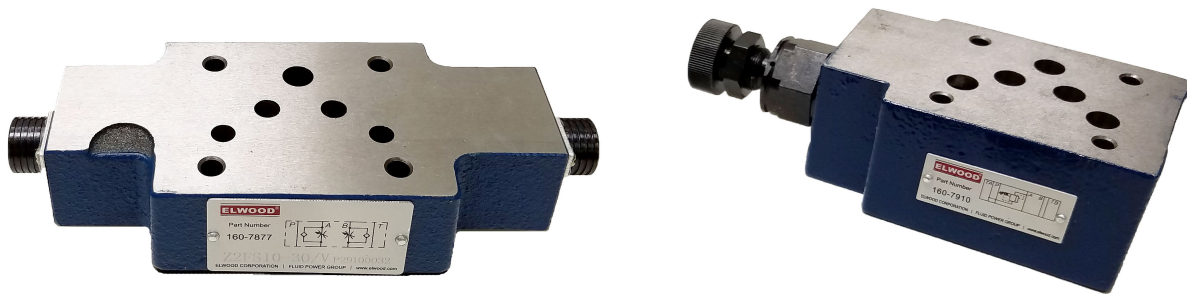


GS-Series valves are production proven oil and hydrocarbon based fluid valves, ready for your applications.

Many of these valves are drop-in replacements for Vickers, Parker, Rexroth, and other conventional valve manufacturers.

Offerings include directional control valves, check valves, and pressure control valves.

Contact your Fluid Power specialist today for more information!



Double Throttle Check Valves (GSDTC)

The GS Series Double Throttle Check Valves limit flow in one direction and allow free return flow in the opposite direction by aligning two throttle checks symmetrically.

- Sandwich Plate Design
- Carbon Steel
- Actuator Velocity Adjustment
 - Install between main valve and subplate
 - Limits main valve flow
- Pilot-Operated Directional
 - Install between pilot and main valve
 - Limits pilot valve flow

Pilot Operated Check Valve (GSPOC)

The GS Series Pilot Operated Check Valve is a releasable check valve used for leakage-free blocking of one or two actuators.

- Sandwich Plate Design
- D03 & D05 Mounting Patterns
- Carbon Steel
- Various Cracking Pressures

Directional Valve (GSDV)

The GS Series Directional Valve is a solenoid-actuated spool valve used for stopping, allowing, and changing the direction of fluid flow.

- 4/3, 4/2, or 3/2-Way Versions
- Carbon Steel
- D03 & D05 Mounting Patterns
- High-Powered Wet Pin Solenoid
- Optional Manual Override

Pressure Reducer Valve (GSRD) Direct Operated

The GS Series Pressure Reducer is a 3-way direct operated pressure reducing valve. Pressure is maintained at a reduced level in a circuit.

- Sandwich Plate Design
- Carbon Steel
- D03 & D05 Mounting Patterns
- Pressure reduction in A, B or P channels
- Optional Check Valve
- Pressure Ratings:
 - 25 bar (360 PSI)
 - 75 bar (1,100 PSI)
 - 150 bar (2,175 PSI)
 - 210 bar (3,050 PSI)

Pressure Relief Valve (GSRL) Pilot Operated

The GS Series Pressure Relief Valve is a pilot operated relief that limits pressure in a hydraulic system.

- Sandwich Plate Design
- Carbon Steel

Pressure Relief Valve (GSRL) Pilot Operated

The GS Series Pressure Reducer is a pilot operated pressure relief valve. Operating pressure is limited.

- Subplate Mounting
- Threaded Connection
- Corrosion Resistance
- Normally Open / Normally Closed

ELWOOD CORPORATE POLICY STATEMENT

It is the policy of Elwood to provide our customers with products that meet or exceed their expectations for performance, reliability and safety while ensuring compliance with applicable laws and regulations, and to continually improve all aspects of our business.

For custom specifications and non-standard voltages, please contact us! Our team at Elwood is happy to customize a valve to fit your requirements!



195 West Ryan Road
Oak Creek, WI 53154
414-764-7500
info@elwood.com
www.elwood.com/fluidpower.html